



천조코퍼레이션
CHUNJO CORPORATION

KOBELCO

CKE2500

Max. Lifting Capacity: 250 t
Max. Boom Length: 91.4 m
Max. Jib Combination: 76.2 + 30.5 m
Max. Luffing Jib Combination: 51.8 + 61.0 m

S P E C I F I C A T I O N S

Main Boom	
Max. Lifting Capacity	250 t/4.0 m
Max. Length	91.4 m
Fixed Jib	
Max. Lifting Capacity	26.8 t/9.8 m
Max. Combination	76.2 m + 30.5 m
Luffing Jib	
Max. Lifting Capacity	70 t/9.8 m
Max. Combination	61.0m + 51.8 m, 51.8 m + 61.0 m
Luffing Angle	63° ~ 88°
Main & Aux. Winch	
Max. Line Speed	110 m/min (1st layer)
Rated Line Pull	132 kN (13.5 tf)
Max. Line Pull	245 kN (25 tf)
Wire Rope	25 mm
Wire Rope Length	480 m (Main) 385 m (Aux.)
Brake Type	Wet-type multiple disc brake
Free-Fall	Option

Working Speed	
Swing Speed	2.1 min ⁻¹ (rpm)
Travel Speed	1.1/0.7 km/h
Power Plant	
Model	Mitsubishi 6D24-TLU2D
Engine Output	235 kW/2,000 min ⁻¹ (rpm)
Fuel Tank Capacity	400 liters
Hydraulic System	
Main Pumps	4 variable displacement
Max. Pressure	30.9 MPa (315 kgf/cm ²)
Hydraulic Tank Capacity	550 liters
Self-Erection Device	
	Standard



CHUNJO Corporation

9F Jung Woo B/D, 1111, Chunhodaero, Gangdong-gu, Seoul, Republic of Korea 05544

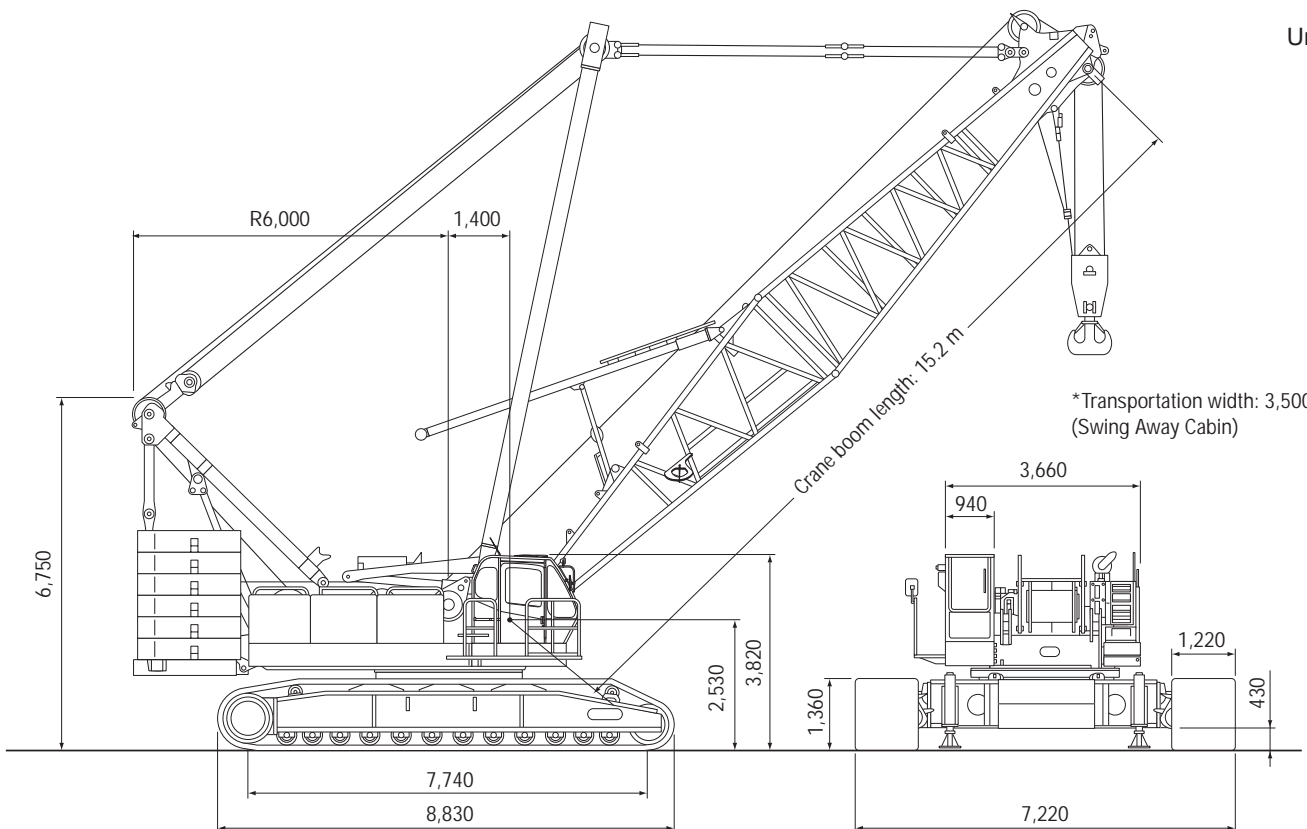
Tel : 82-2-489-3438

Fax : 82-2-489-3439

www.chunjo.com

GENERAL DIMENSIONS

Unit: mm



KOBELCO CRANES CO., LTD.

BOOM & JIB ARRANGEMENT

CRANE BOOM ARRANGEMENT

Boom length m (ft)	Boom arrangement
15.2 (50)	Base-Tip
18.3 (60)	Base-A-Tip
21.3 (70)	Base-A-A-Tip, Base-B-Tip
24.4 (80)	Base-A-B-Tip
27.4 (90)	Base-A-A-B-Tip, Base-D-Tip, Base-B-B-Tip
30.5 (100)	Base-A-B-B-Tip, Base-A-D-Tip
33.5 (110)	Base-A-A-B-B-Tip, Base-A-A-D-Tip, Base-B-D-Tip
36.6 (120)	Base-A-B-D-Tip
39.6 (130)	Base-A-A-B-D-Tip, Base-D-D-Tip, Base-B-B-D-Tip
42.7 (140)	Base-A-B-B-D-Tip, Base-A-D-D-Tip
45.7 (150)	Base-A-A-B-B-D-Tip, Base-A-A-D-D-Tip, Base-B-D-D-Tip
48.8 (160)	Base-A-B-D-D-Tip
51.8 (170)	Base-A-A-B-D-D-Tip, Base-B-B-D-D-Tip, Base-D-D-D-Tip
54.9 (180)	Base-A-B-B-D-D-Tip, Base-A-D-D-D-Tip
57.9 (190)	Base-A-A-B-B-D-D-Tip, Base-A-A-D-D-D-Tip, Base-B-D-D-D-Tip
61.0 (200)	Base-A-B-D-D-D-Tip
64.0 (210)	Base-A-A-B-D-D-D-Tip, Base-B-B-D-D-D-Tip, Base-D-D-D-D-Tip
67.1 (220)	Base-A-B-B-D-D-D-Tip, Base-A-D-D-D-D-Tip
70.1 (230)	Base-A-A-B-B-D-D-D-Tip, Base-A-A-D-D-D-D-Tip, Base-B-D-D-D-D-Tip
73.2 (240)	Base-A-B-D-D-D-D-Tip
76.2 (250)	Base-A-A-B-B-D-D-D-D-Tip, Base-B-B-D-D-D-D-Tip, Base-D-D-D-D-D-Tip
79.3 (260)	Base-A-B-B-D-D-D-D-Tip, Base-A-D-D-D-D-D-Tip
82.3 (270)	Base-A-A-B-B-D-D-D-D-Tip, Base-A-A-D-D-D-D-D-Tip, Base-B-D-D-D-D-D-Tip
85.3 (280)	Base-A-B-B-D-D-D-D-Tip
88.4 (290)	Base-A-A-B-B-D-D-D-D-Tip, Base-B-B-D-D-D-D-D-Tip
91.4 (300)	Base-A-B-B-B-D-D-D-D-Tip

Base Boom Length and Boom Tip Length
 Base = 7.8 m (25'), Tip = 8.3 m (27')
 Insert Boom
 A = 3.0 m (10'), B = 6.1 m (20'), D = 12.2 m (40')

FIXED JIB ARRANGEMENT

Jib length m (ft)	Jib arrangement
12.2 (40)	Base-A-Tip
18.3 (60)	Base-A-B-Tip
24.4 (80)	Base-A-B-B-Tip
30.5 (100)	Base-A-B-B-B-Tip

Base Jib Length and Jib Tip Length
 Base = 7.8 m (25'), Tip = 8.3 m (27')
 Insert Jib
 A = 3.0 m (10'), B = 6.1 m (20')

LUFFING BOOM ARRANGEMENT

Boom length m (ft)	Boom arrangement
21.3 (70)	Base-A-B-Cap
24.4 (80)	Base-A-A-B-Cap, Base-B-B-Cap, Base-D-Cap
27.4 (90)	Base-A-B-B-Cap, Base-A-D-Cap
30.5 (100)	Base-A-A-B-B-Cap, Base-A-A-D-Cap, Base-B-D-Cap
33.5 (110)	Base-A-B-D-Cap
36.6 (120)	Base-A-A-B-D-Cap, Base-B-B-D-Cap, Base-D-D-Cap
39.6 (130)	Base-A-B-B-D-Cap, Base-A-D-D-Cap
42.7 (140)	Base-A-A-B-B-D-Cap, Base-A-A-D-D-Cap, Base-B-D-D-Cap
45.7 (150)	Base-A-B-D-D-Cap
48.8 (160)	Base-A-A-B-B-D-D-Cap, Base-B-B-D-D-Cap, Base-D-D-D-Cap
51.8 (170)	Base-A-B-B-B-D-D-Cap, Base-A-D-D-D-Cap
54.9 (180)	Base-A-A-B-B-B-D-D-Cap, Base-B-B-D-D-D-Cap, Base-A-A-D-D-D-Cap
57.9 (190)	Base-A-B-B-D-D-D-Cap
61.0 (200)	Base-A-A-B-B-D-D-D-Cap, Base-B-B-D-D-D-Cap

Base Boom Length and Luffing Boom Cap Length
 Base = 7.8 m (25'), Cap = 8.3 m (27')
 Insert Luffing Boom
 A = 3.0 m (10'), B = 6.1 m (20'), D = 12.2 m (40')

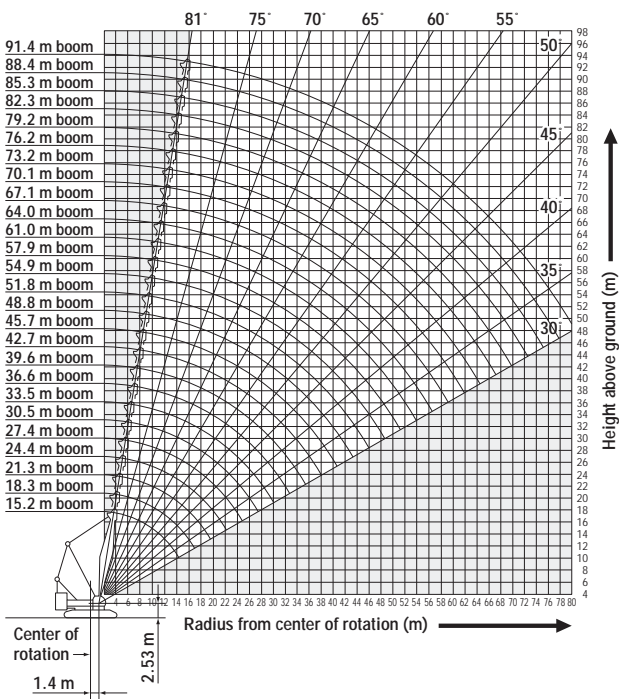
LUFFING JIB ARRANGEMENT

Jib length m (ft)	Jib arrangement
21.3 (70)	Base-A-B-Tip
24.4 (80)	Base-A-A-B-Tip, Base-B-B-Tip, Base-D-Tip
27.4 (90)	Base-A-B-B-Tip, Base-A-D-Tip
30.5 (100)	Base-A-A-B-B-Tip, Base-B-B-Tip, Base-A-A-D-Tip
33.5 (110)	Base-A-B-D-Tip
36.6 (120)	Base-A-A-B-B-D-Tip, Base-B-B-B-D-Tip, Base-D-D-Tip
39.6 (130)	Base-A-B-B-B-D-Tip, Base-A-D-D-Tip
42.7 (140)	Base-A-A-B-B-B-D-Tip, Base-B-B-B-D-Tip, Base-A-A-D-D-Tip
45.7 (150)	Base-A-B-B-D-Tip
48.8 (160)	Base-A-A-B-B-B-D-Tip, Base-B-B-B-B-D-Tip
51.8 (170)	Base-A-B-B-B-B-D-Tip
54.9 (180)	Base-A-A-B-B-B-B-D-Tip, Base-A-A-D-D-D-Tip, Base-B-B-D-D-D-Tip
57.9 (190)	Base-A-B-B-B-B-D-Tip
61.0 (200)	Base-A-A-B-B-B-B-D-Tip

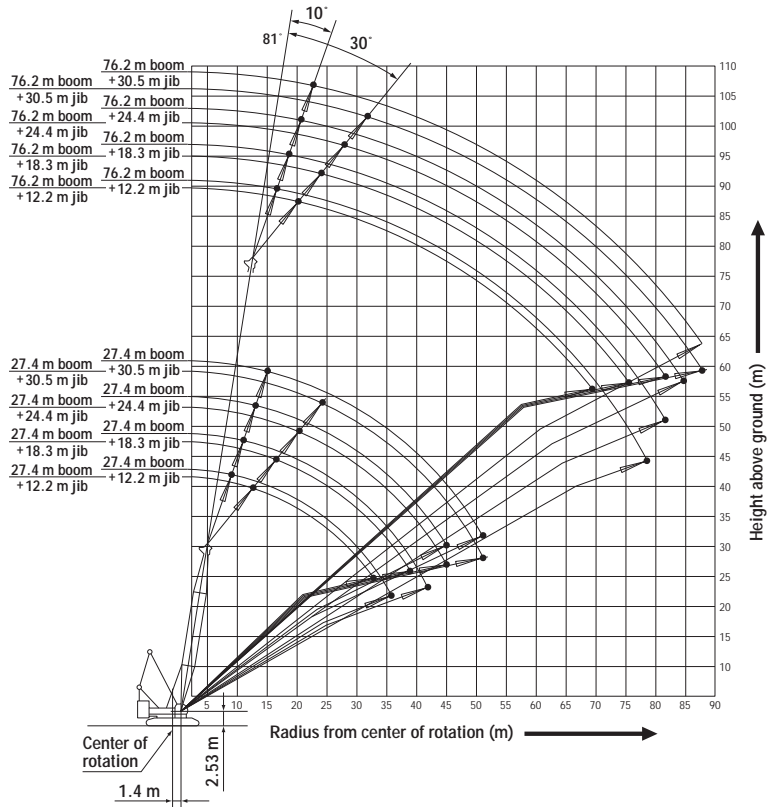
Base Luffing Jib Length and Luffing Jib Tip Length
 Base = 7.8 m (25'), Tip = 8.3 m (27')
 Insert Luffing Jib
 A = 3.0 m (10'), B = 6.1 m (20'), D = 12.2 m (40')

WORKING RADIUS

CRANE BOOM

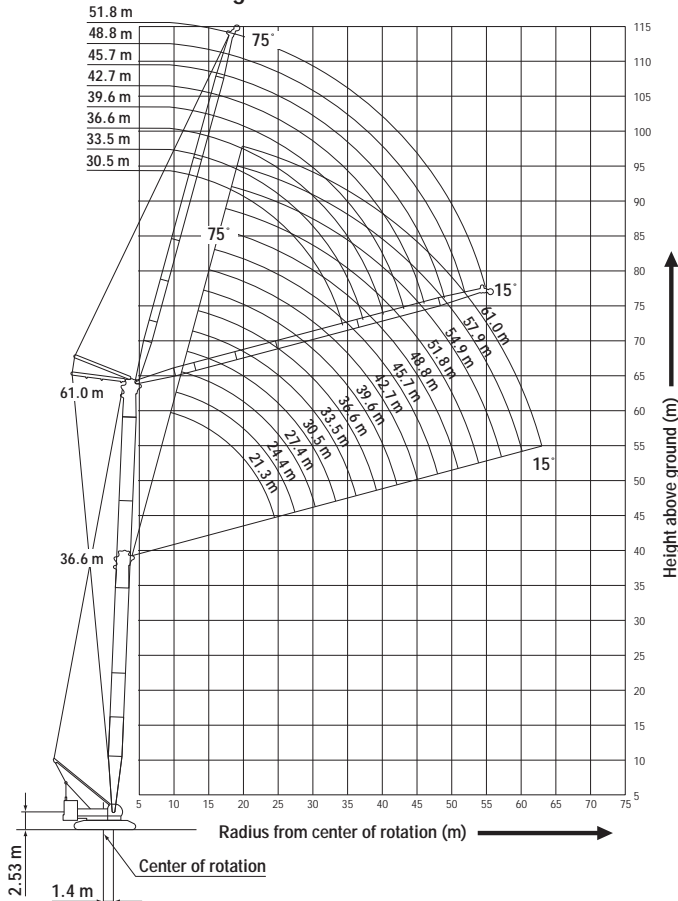


FIXED JIB (Jib Offset Angle: 10°, 30°)

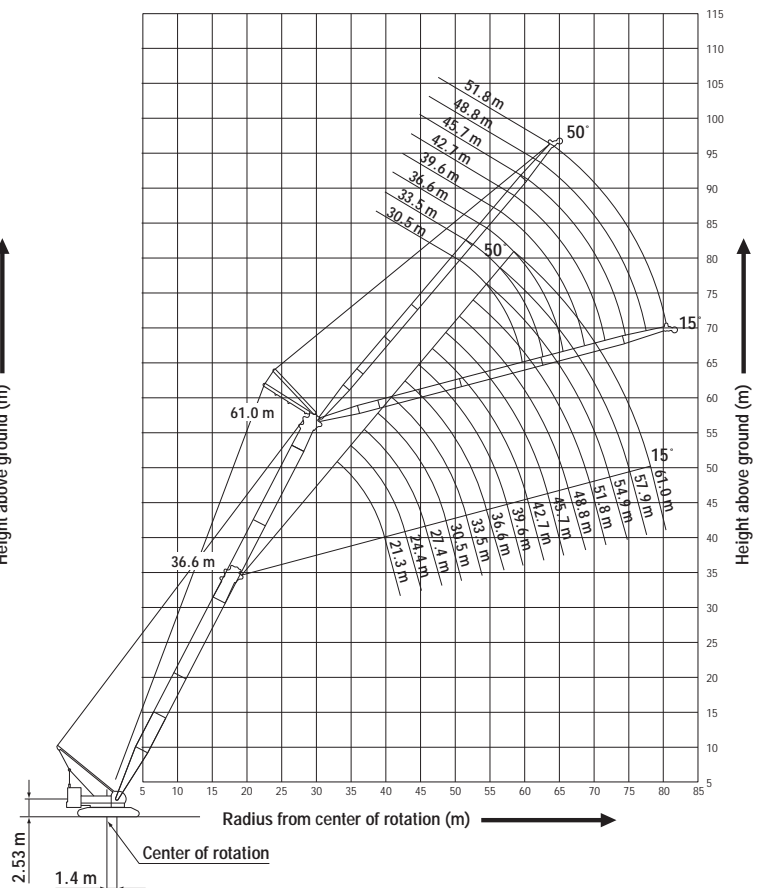


LUFFING JIB

Boom Angle: 88°



Boom Angle: 63°

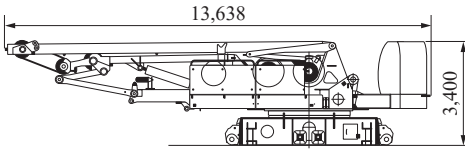


SPECIFICATIONS OF PARTS AND ATTACHMENTS

Dimensions: mm Weight: kg

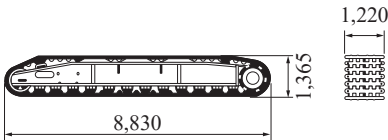
Base Machine

Weight: 44,900 kg Width: 3,500 mm



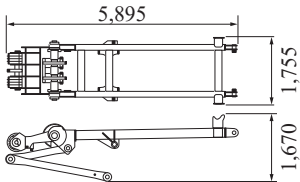
Crawler

Weight: 23,500 kg



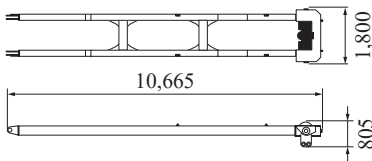
Gantry

Weight: 2,920 kg



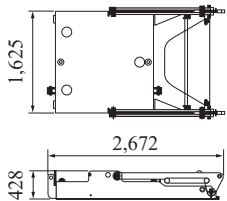
Mast

Weight: 2,970 kg



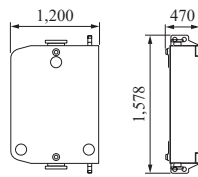
Carbodyweight A

Weight: 4,375 kg x 2 pieces



Carbodyweight B

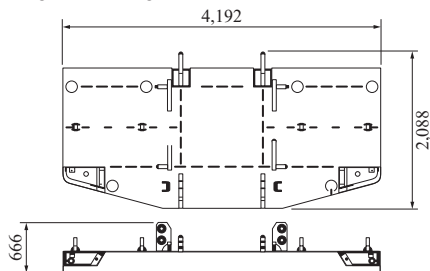
Weight: 5,625 kg x 2 pieces



Counterweight Type 1

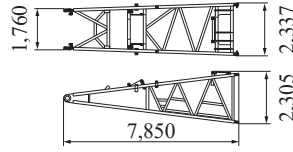
Counterweight A

Weight: 12,500 kg



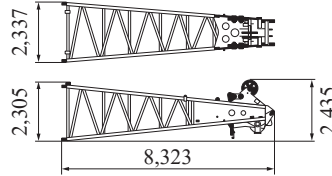
Boom Base

Weight: 3,250 kg

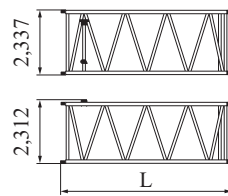


Boom Top

Weight: 3,138 kg (with guy cables)



Insert Boom

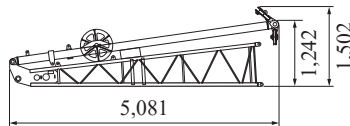


	L (mm)	Weight (kg)*
3.0m	3,175	776
6.1m	6,223	1,292
12.2m	12,320	2,243

*with guy cables

Jib Base with Strut (For Crane)

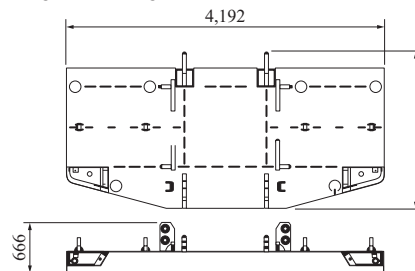
Weight: 510 kg Width: 1,040 mm



Counterweight Type 2

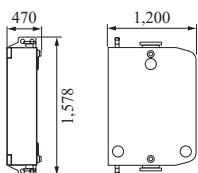
Counterweight A

Weight: 12,506 kg



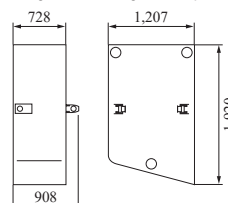
Counterweight B, C

Weight: 5,625 kg x 6 x 2 pieces



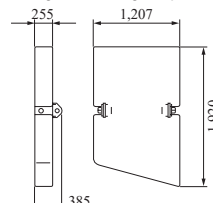
Counterweight B, C

Weight: 10,000 kg x 3 x 2 pieces



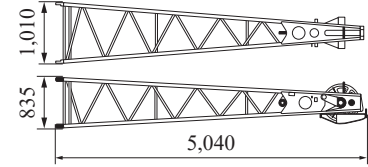
Counterweight D, E

Weight: 3,750 kg x 2 pieces



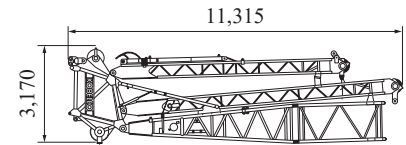
Jib Top (For Crane)

Weight: 315 kg



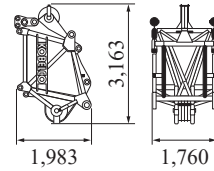
Travel Kit Assembly

Weight: 6,000 kg



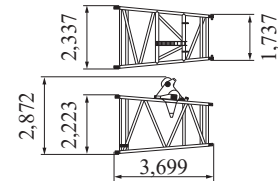
Luffing Main Boom Top

Weight: 1,890 kg



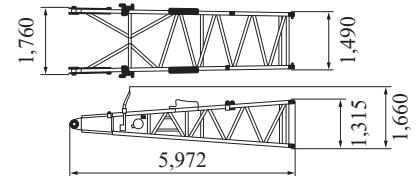
Luffing Taper Insert Boom

Weight: 1,030 kg



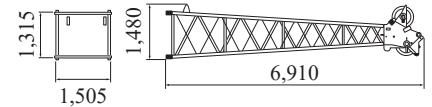
Luffing Jib Base

Weight: 1,140 kg



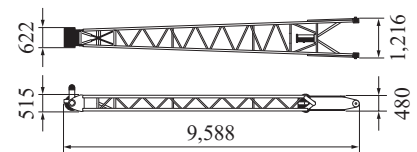
Luffing Jib Top

Weight: 1,170 kg



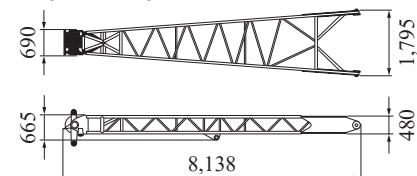
Front Strut (Luffing Jib)

Weight: 1,160 kg



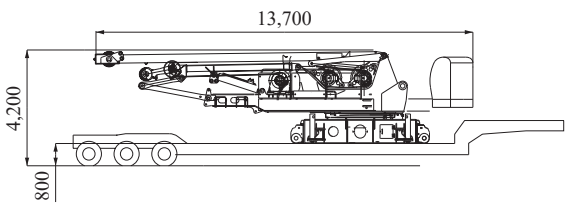
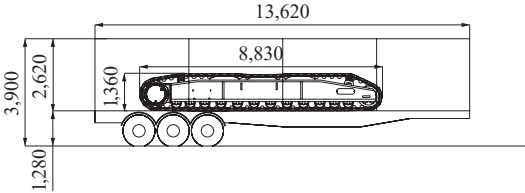
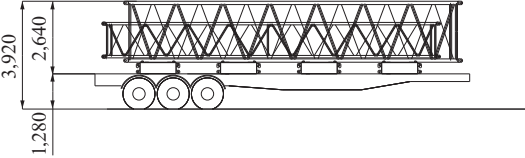
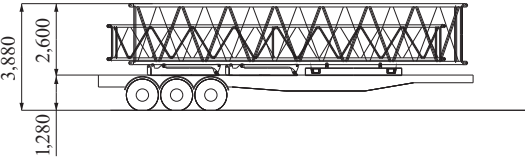
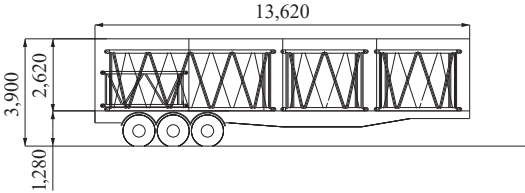
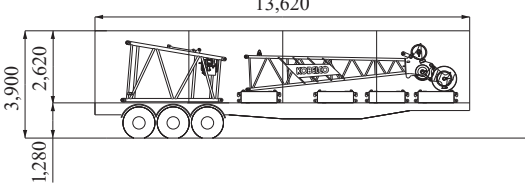
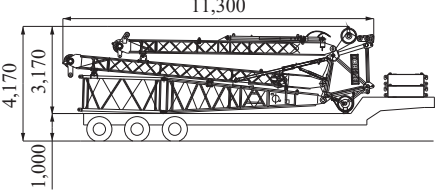
Rear Strut (Luffing Jib)

Weight: 1,130 kg



TRANSPORTATION PLAN

(Main Boom 61.0 m + Luffing Jib 51.8 m, Counterweight: Type 1)

Configuration	Description	Total Weight
<p>No. 1 Low Loader</p> 	<p>Base Machine = Including 3rd winch Translifter All wire ropes</p>	44.90 ton
<p>No. 2 & No. 3 Tent Side Truck</p> 	Crawler =	23.50 ton
<p>No. 4 & No. 5 Flat Bed Trailer</p> 	<p>Counterweight (4 x 5.63 ton) = 40 ft Main Boom x 1 = 40 ft Luffing Jib x 1 =</p> <hr/> <p>Total =</p>	<p>22.52 ton 2.24 ton 0.96 ton</p> <hr/> <p>25.72 ton</p>
<p>No. 6 Flat Bed Trailer</p> 	<p>Counterweight A x 1 = 40 ft Main Boom x 1 = 20 ft Luffing Jib (2 x 0.54 ton) = Carbodyweight A (2 x 4.38 ton) =</p> <hr/> <p>Total =</p>	<p>12.89 ton 2.24 ton 1.08 ton 8.76 ton</p> <hr/> <p>24.97 ton</p>
<p>No. 7 Tent Side Truck</p> 	<p>10 ft Main Boom (2 x 0.74 ton) = 20 ft Main Boom x 1 = 10 ft Luffing Jib Insert x 1 =</p> <hr/> <p>Total =</p>	<p>1.48 ton 1.29 ton 0.31 ton</p> <hr/> <p>3.08 ton</p>
<p>No. 8 Tent Side Truck</p> 	<p>Luffing Jib Top x 1 = Luffing Taper x 1 = Counterweight (4 x 5.63 ton) =</p> <hr/> <p>Total =</p>	<p>1.17 ton 1.03 ton 22.52 ton</p> <hr/> <p>24.72 ton</p>
<p>No. 9 Semi Loader</p> 	<p>Travel Kit = Carbodyweight B (2 x 5.63 ton) =</p> <hr/> <p>Total =</p>	<p>6.00 ton 11.26 ton</p> <hr/> <p>17.26 ton</p>

Note: This transport plan depends on your specification of trailer and the areas or countries where you transport.

Attachments	Weight	Dimensions (L x W x H)
Boom backstop	680 kg	7,055 mm x 997 mm
3.0 m (10 ft) Insert jib	110 kg	3,128 mm x 1,020 mm x 840 mm
6.1 m (20 ft) Insert jib	190 kg	6,175 mm x 1,020 mm x 840 mm
3.0 m (10 ft) Insert Luffing jib	310 kg	3,165 mm x 1,490 mm x 1,290 mm
6.1 m (20 ft) Insert Luffing jib	540 kg	6,210 mm x 1,490 mm x 1,290 mm
12.2 m (40 ft) Insert Luffing jib	960 kg	12,305 mm x 1,490 mm x 1,290 mm
Luffing jib backstop	180 kg	3,575 mm x 346 mm x 226 mm
Strut backstop (luffing jib)	180 kg	3,575 mm x 268 mm
Auxiliary sheave	276 kg	1,080 mm x 930 mm
Auxiliary sheave (luffing jib)	380 kg	1,012 mm x 893 mm x 914 mm
Lower spreader	700 kg	1,350 mm x 1,305 mm x 500 mm
Luffing jib drum	1,470 kg	1,696 mm x 1,040 mm x 1,063 mm
Ball hook	450 kg	1,200 mm x 380 mm dia.
35-ton hook	900 kg	1,575 mm x 365 mm x 700 mm
70-ton hook	1,200 kg	1,825 mm x 384 mm x 700 mm
100-ton hook	1,800 kg	2,025 mm x 555 mm x 700 mm
150-ton hook	2,300 kg	2,665 mm x 715 mm x 700 mm
250-ton hook	4,200 kg	2,308 mm x 1,616 mm x 720 mm

Note: Due to our policy of continual product improvements all designs and specifications are subject to change without advance notice.



KOBELCO CRANES CO., LTD.

17-1, Higashigotanda 2-chome, Shinagawa-ku, Tokyo 141-8626 JAPAN

Tel: ++81 (0) 3-5789-2130 Fax: ++81 (0) 3-5789-3372